

Junior Fall Parent Night

November 12, 2009

“Navigating the College Admission Process”



RIDGE HIGH SCHOOL GUIDANCE DEPARTMENT

Francis T. Howlett, Jr., Principal

Sean Siet, Director of Curriculum and Instruction

Jillian Shadis, Head Counselor

**Guidance Counselors:
908-204-2585**

Marguerite Cahill – Ext. 114 – mcahill@bernardsboe.com

Ruthann Dein – Ext. 112 – rdein@bernardsboe.com

Rebecca Muraview – Ext. 113 – rmuraview@bernardsboe.com

Linda Riccobono – Ext. 117 – lriccobono@bernardsboe.com

Kimberlee Sweet – Ext. 118 – ksweet@bernardsboe.com

Jackie Treanor – Ext. 116 – jtreatnor@bernardsboe.com

Katherine Van Der Stad – Ext. 109 – kvanderstad@bernardsboe.com

Peggy Wu – Ext. 111 – mwu@bernardsboe.com

College Admissions: Planning Calendar

JUNIOR YEAR

SEPTEMBER - NOVEMBER

- Take the PSAT
- Junior Parents - *"Navigating the College Admissions Process"*
- Visit College Fairs
- Attend College Rep. visits to Ridge HS

DECEMBER - JANUARY

- Parent Night -Financial Aid Speaker
- Parent Night - LD Presentation
- PSAT results distributed
- Junior Module - *"Navigating the College Selection Process"*

FEBRUARY-MARCH-APRIL

- Continue the College Search Process
- Senior Year Scheduling
- Junior Parents - *"Navigating the College Selection Process Part 2"*
- Individual Post-Secondary Conferences

SPRING BREAK

- Visit Colleges
- Refine your College List

MAY - JUNE

- AP Tests
- College Panel Presentation
- Take the SAT I/SAT II/ACT
- Arrange for Letters of Recommendation

SEPTEMBER

- Senior summer packet due the second week
- Senior Module -*"The Mechanics of Completing the College Application"*
- Parent Night - *"The Mechanics of Completing the College Application"*
- Attend College Representative visits to Ridge HS
- Take and/or send SAT or ACTs

SENIOR YEAR

SUMMER MONTHS

- Complete the Senior summer packet
- Continue visiting colleges
- Begin to finalize your list of colleges
- Create accounts on colleges' websites to obtain online applications
- Brainstorm/draft essays
- Schedule college interviews (if necessary)

OCTOBER -NOVEMBER

- Attend the College Fair
- Attend College Rep. visits to Ridge HS
- Parents - College Speaker
- Complete applications
- Take and/or send final SAT-I/SAT-II/ACT tests
- Adhere to all application deadlines

DECEMBER - MARCH

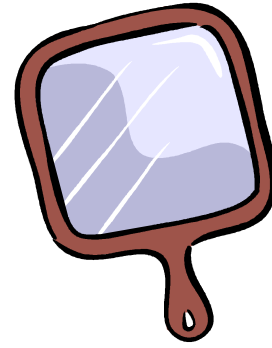
- Parent Night - Financial Aid Speaker
- Submit Free Application for Financial Aid (FAFSA) after January 1
- Parent Night - LD Presentation
- Submit College Applications
- Mid-year reports sent to colleges by guidance
- Apply for local scholarships

APRIL - MAY

- College admissions decisions released
- May 1st - Deposits due!!!

HELPING YOUR STUDENT TO FIND THE RIGHT COLLEGE

- It is a process!
- Encourage Self-Reflection
 - Interests/aptitudes
 - Career goals
 - Academic strengths and weaknesses
 - GPA and SATs/ACTs

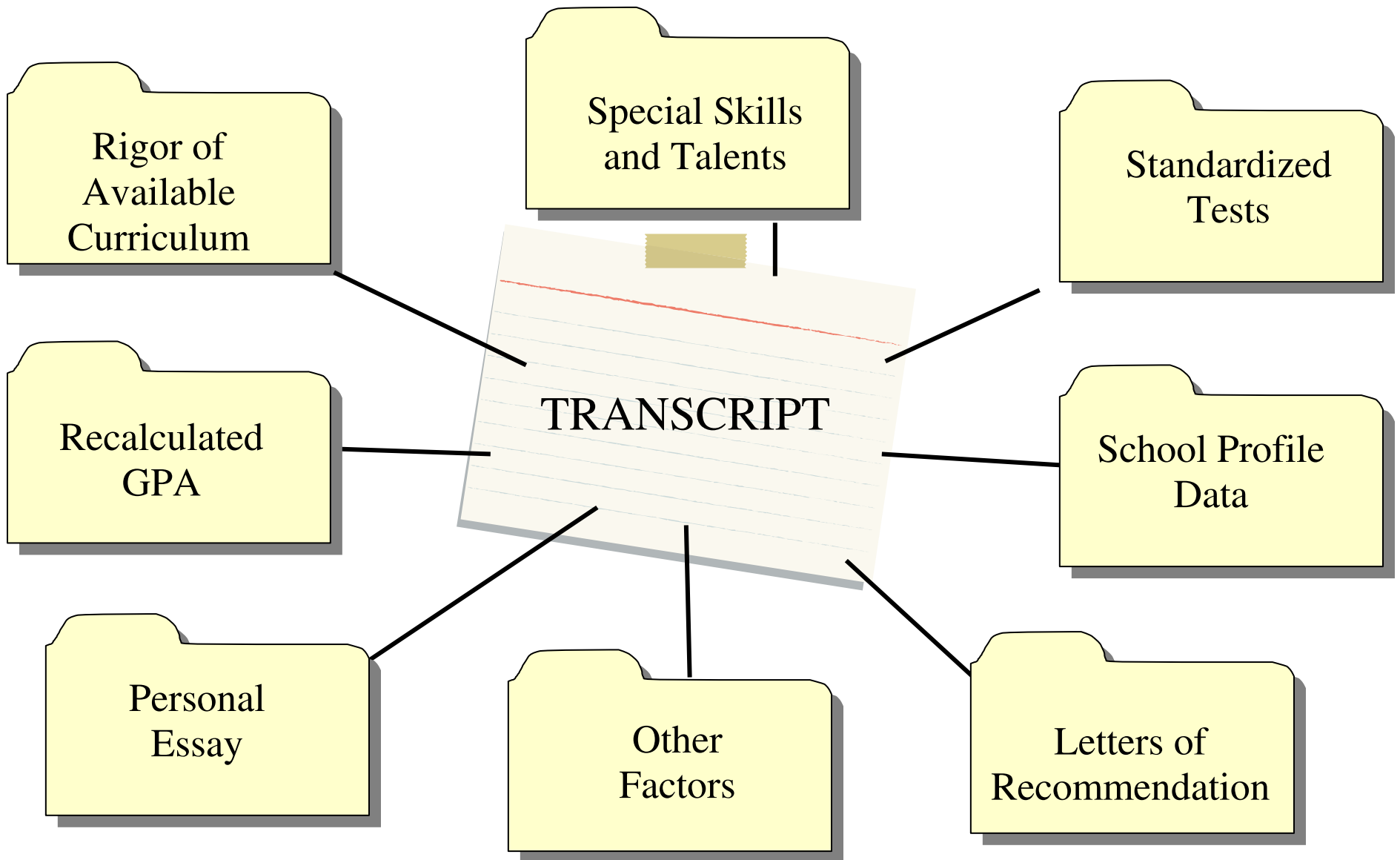


- Weigh the options
 - Majors desired
 - States preferred
 - Size and setting preferred
 - Activities desired
 - Academic standards he/she can match
 - Costs you can meet

- Refine the list
 - Review available materials of colleges (websites, virtual tours, videos, etc.)
 - Make visits to different types of campuses. Attend campus tour days, open houses, financial aid workshops, etc.
 - Plan ahead (prepare questions to ask, research “the features” of each college)
 - Arrange an interview if possible
 - Check out classes (sit in on one or several)
 - Explore all the facilities (dorms, athletic facilities, library/research areas, etc.)
 - Stay overnight
 - Talk to students on campus
 - Check out “safety” issues
 - “Do” the town



HOW DO COLLEGES EVALUATE THE APPLICATION?



College Admissions Glossary of Terms

American College Test (ACT): The majority of colleges will accept this test in lieu of the SAT I. This test measures student learning in four different areas: English, Mathematics, Reading, and Natural Science. There is an optional writing section that most colleges require.

ACT/CEEB/SAT School Code Number: 310050

Application Policies:

- **Early Decision Policy:** Policy by which a student must apply to a college by Nov. 1st or 15th and the college replies by December 15th or January 1. If the student is accepted, he/she is obliged by contract to attend.
- **Early Action/Early Notification Policy:** Policy whereby a student will be notified of a college's decision within a set period of time providing the application is received in the admissions office by a specific date. These dates tend to parallel those of Early Decision. If accepted, the student is not obliged to attend.
- **Rolling Admissions:** A number of institutions review admissions applications on a rolling (continuing) basis. Acceptance decisions are made shortly after completed applications are received.
- **Single Choice Early Action:** An early choice that is not binding upon a candidate, but prohibits a student from applying to any other college under an Early Action or Early Decision program.
- **Regular Decision:** The application process in which a student submits an application to an institution by a specified date and receives a decision within a reasonable and clearly stated period of time. A student may apply to other institutions without restriction.
- **Open Admissions:** The policy of some colleges of admitting virtually all academic high school graduates with minimal attention to high school grades and admission test scores. County Community Colleges are an example.
- **Priority/Preferred:** The admissions office sets internal deadlines to gauge the number of its applicants, and to give scholarship consideration. The application is often divided into sections with a separate deadline for each section (i.e. a "Priority" or "Preferred" deadline date, along with a Regular Decision, Rolling, or Early Action deadline date).

CSS/Financial Aid PROFILE: A form used by the College Scholarship Service (CSS), the financial aid division of the College Board, to collect information about the student's total family income, assets and expenses. From this information the CSS prepares an analysis/ a personalized Profile of the family's potential contribution toward college expenses. Many colleges/universities use the Profile to award nonfederal private student aid funds. The application process for the Profile can begin in September.

College Admissions Glossary of Terms (con't)

Free Application for Federal Student Aid (FAFSA): A form required to apply to all Federal and New Jersey financial aid programs. Some colleges also use this form to determine financial aid to prospective students. This should be done online and must be completed after January 1st of the student's senior year (<http://www.fafsa.ed.gov>).

Grade Point Average (GPA): An indicator of the student's overall scholastic performance. The GPA is computed by totaling the number of grade points earned in each course and then dividing the sum by the number of courses carried. For more information regarding the computing factors in the weighted and unweighted GPAs, refer to Ridge High School's Program of Studies.

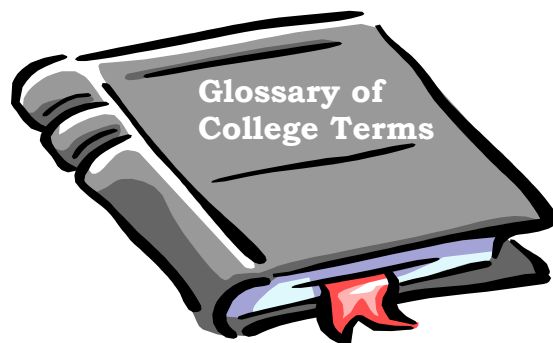
Scholastic Assessment Tests

SAT I: Reasoning Test: This test measures critical reading, critical writing and mathematical reasoning skills and abilities that have been developed over time, both in and out of school.

SAT II: Subject Tests: There are over 20 one-hour subject tests offered by Education Testing Service that attempt to measure student academic achievement. These tests fall into five general subject areas: English, History, Mathematics, Science, and Languages. Check the website (www.collegeboard.com) for details.

Test of English as a Foreign Language (TOEFL): This test is used to demonstrate proficiency in English and is divided into four sections: listening, structure, reading, and writing. This test is often taken by international students or by students whose primary language spoken at home is something other than English. This is internet-based testing. For more information check the website: www.ets.org/toefl.

Transcript: Official record of high school or college courses and grades.



Exploring Colleges

Naviance: Your individual student account

On the Internet

ACT – www.actstudent.org

American Education Services – www.educationplanner.com

Christian Colleges – www.christiancollegesearch.com

College Board – www.collegeboard.com

Department of Education – www.students.gov

Fair Test – www.fairtest.org

Hillel – www.hillel.org

Historically Black Colleges – www.edonline.com/cq/hbcu

NCAA Clearinghouse – www.ncaaeligibilitycenter.com

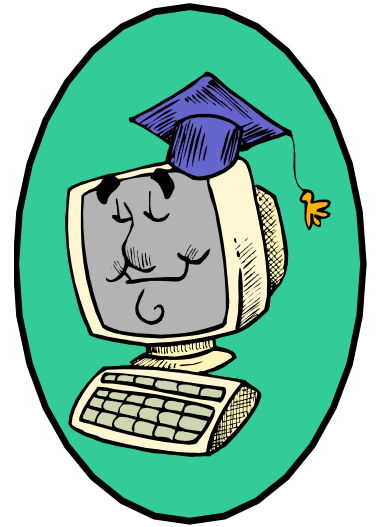
Mapping Your Future – www.mapping-your-future.org

My College Options – www.mycollegeoptions.com

The National Association for College Admission Counseling - www.nacacnet.org

Peterson's – www.petersons.com

Princeton Review – www.princetonreview.com



Reference Books

100 Colleges Where Average Students Can Excel by Joe Anne Adler

A is for Admission by Michele Hernandez

Admission Matters: What Students and Parents Need to Know About Getting In
by Sally Springer and Marion Franck

Barron's Profiles of American Colleges

College Unranked: Ending the College Admissions Frenzy by Lloyd Thacker

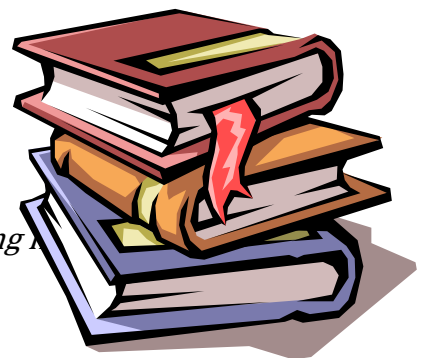
Colleges That Change Lives: 40 Schools That Will Change the Way You Think About Colleges by
Lauren Pope

Do It Write by Gary Ripple

Fiske Guide to Colleges by Edward B. Fiske

Letting Go, A Parents Guide to Understanding the College Years by Karen Coburn and Madge Treeger

Looking Beyond the Ivy League: Finding the College That's Right for You by Lauren Pope



Rugg's Recommendations on the Colleges by Frederick Rugg

Naviance Family Connection

Naviance is a secure, web-based resource that can assist you in making post-secondary plans. The Naviance Family Connection makes college research easy to do from home. All Ridge students have individual accounts and have access to the application history of Ridge Classes of 2003 - 2009.

GETTING STARTED

- **Link to Ridge HS Guidance Homepage:** <http://www2.bernardsboe.com/guidance/default.aspx>
- **Naviance Family Connection:** <https://connection.naviance.com/fc/signin.php?hsid=ridge>
 - **Signing in:** New User / Returning User

WHAT'S NEW (Homepage)

- News, emails, and messages

FROM YOUR SCHOOL (Homepage)

- **Document Library:** PDF and Word documents uploaded by the Guidance Office.
- **Pages:** Access to additional websites for College and Career Search, Financial Aid, Test Preparation, College Athletics and Military
- **Contact Us:** Contact your Guidance Counselor directly.

COLLEGES (Tab)

- **College Compare:** Compare the statistics of Ridge student acceptances for multiple colleges of interest to your academic profile (Cumulative, Weighted GPA and PSAT/SAT score)
- **College Look-up:** Direct link to the college's Naviance webpage. Check a college's profile and statistics. View the Ridge students' application overlaps. Link to the college's official website.
- **College Search:** Use multiple qualifiers to narrow down your search from over 3000 colleges. Find a list of colleges based on characteristics that are important to you. Add colleges of interest directly into *Colleges I'm thinking about*. Save your searches for future modifications.
- **Acceptance History and Scattergrams:** Direct access to information also found on individual college Naviance webpages. *Scattergrams* are a graphical representation of Ridge application results beginning with the Class of 2003. *Acceptance History* presents the number of accepted Ridge applications for each college and the number of Ridge students enrolled.
- **Scholarship List:** Updated postings of available scholarships as received by the Ridge Guidance Department

CAREERS (Tab)

- **Explore careers & clusters:** Explore careers alphabetically, by category or according to interests and skills determined by the career interest profiler.
- **Career interest profile:** Take the career interest profiler, Holland's Theory of Career Choice, a tool that can help you discover the types of work activities and careers that match your interests. The Holland code career model maps job environments to six different personality types.

ABOUT ME (Tab)

- **Favorite Colleges:** Compile a list of colleges you are considering and view statistical data for each.
- **Personality Type and Learning Style:** Online inventories to help you explore your strengths and areas of interest.
- **Résumé:** An organizational tool to help you create your Activity Résumé
- **Journal:** Reflect on colleges as you conduct your research and visits. This information will be useful in your applications and essays.
- **Profile and Test Scores:** Preset information by District Technology Coordinator, including cumulative, weighted GPA and PSAT, SAT, ACT and AP scores reported to Ridge.

Middlebury

Top 10 Things for Parents to Remember

It is good, of course, that students and parents approach this process jointly, but we all know that at its best, the process itself can prepare students for the independence that they will experience in college. The following list contains some possible symptoms of parental overinvolvement.

10. **Remember that this process is not about you.** No matter how similar your children may be to you, they need to make their own decisions and observations.
9. **Support and encouragement are more appropriate than pressure and unsolicited advice.** Allow your children to seek **you** out and restrain yourself from imposing your viewpoint upon them.
8. **Do not use the words “we” or “our” when referring to your children’s application process.** Those little pronouns are surefire indicators that you have become too involved.
7. **Help them prepare but let them perform.** Encourage them to sleep well and put thought into a college visit, but once on campus, step back and let them drive the experience. This is good practice for the next phase of their lives - adulthood.
6. **Encourage your children to make their own college appointments, phone calls, and e-mails.** When a family arrives at an admissions office, it’s important that the student approach the reception desk, not the parents. We notice! Having control over those details gives them a sense of ownership. Don’t be tempted by the excuse that “I’m just saving them time” or “they are too busy” - students will learn to appreciate all the steps it takes to make big things happen if **they** do them.
5. **Allow your children to ask the questions.** They have their own set of issues that are important to them.
4. **Prepare your children for disappointment.** For many students this is the first time they could face bad news. Remind them there is no perfect school and that admissions decisions do not reflect on their worth as people or your worth as parents.
3. **Never complete any portion of the college application-** yes, even if it is just busy work. That also goes for friends, siblings, counselors, and secretaries. For many colleges, that overstep would be viewed as a violation of the honor policy at the school.
2. **Do not let stereotypes or outdated information steer your children away from schools in which they would otherwise have an interest.** Times have changed and so have colleges.

And the #1 Thing for Parents to Remember about the College Search Process is:

1. **Never, ever, during a college visit buy that souvenir sweatshirt or t-shirt from the bookstore in your size – it’s a dead giveaway!**